

# Simplified Clinical Guide

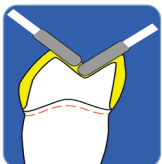
Smart Ceramics.<sup>SM</sup>

# CERCON<sup>®</sup>

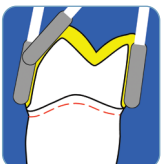


Cercon Zirconia requires a simple, familiar clinical protocol. Preparation design follows established guidelines for all ceramic restorations. Please follow cutting tool manufacturers' instructions for bur selection, disinfection and usage. Also, follow manufacturers' recommendation for cementation or bonding.

## Basic Guidelines



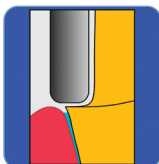
Occlusal reduction of 1.5–2.0 mm.



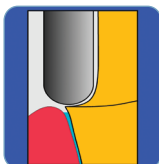
Axial reduction of 0.8–1.5 mm.



Occlusal angle between 120°-140°  
Minimum axial taper of 6° (3° each side).



Shoulder margin option with rounded internal and external angles.



Chamfer margin option with rounded internal and external angles.



Parallel paths of insertion on all bridge and splinted prosthesis.

DENTSPLY  
CERAMCO

*The chemistry of a great smile.*

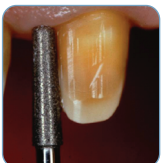
PC090765

## Simplified Clinical Guide

### Anterior Scenario



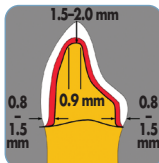
1 Pre operative



2 Axial and incisal reduction



3 Palatal reduction



4 Anterior prep dimensions



5 Anteriors prepared



6 Insertion (single crowns)

### Maxillary Posterior Scenario



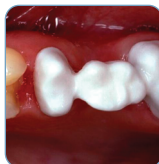
1 Pre operative



2 Reduction



3 Preparation and retraction



4 Try-in



5 Insertion, (three-unit bridge)

### Mandibular Posterior Scenario



1 Pre operative



2 Preparation and retraction



3 Try-in



4 Insertion, (three single posterior crowns)

DENTSPLY  
CERAMCO

*The chemistry of a great smile.*

Six Terri Lane Burlington, NJ 08016  
1-800-487-0100 [www.dentsply.com](http://www.dentsply.com)